

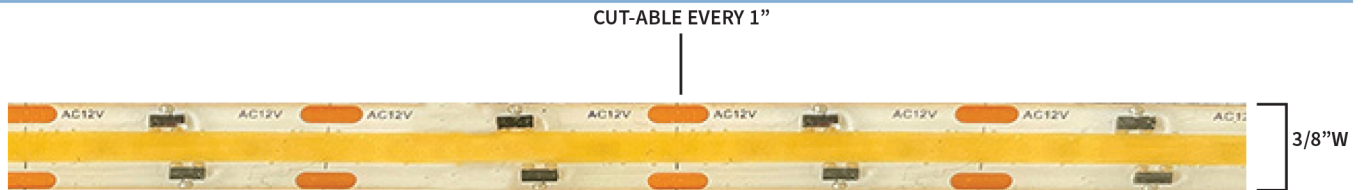
LED DAMP LOCATION COB TAPE (12V AC*)

SOLD IN 16.4 FT AND 32.8 FT ROLLS WITH 3 FT LEADS ON BOTH ENDS

Our NEW LED COB Tape is designed for "dot-free" illumination. To be used with existing **12V AC landscape transformers** without the use of a dedicated driver or converter. LED COB Tape is typically used under stairs, toe kicks, counters, cabinets, bars, coves, overhead soffits, etc. Cob Tape light is dimmable

Designed to be installed facing down only

*Also works on 12V DC power



MODEL	KELVIN	WATTAGE	LUMENS	IP RATING	MAX RUN
LED-OT-COB-0.75W	2700K	0.75W/FT	50 lm/ft	IP65	32.8 FT*
	3000K		55 lm/ft		
MODEL	KELVIN	WATTAGE	LUMENS	IP RATING	MAX RUN
LED-OT-COB-1.5W	2700K	1.5W/FT	100 lm/ft	IP65	32.8 FT*
	3000K		105 lm/ft		

MOUNTING: BACK SIDE OF LED TAPE HAS 3M ADHESIVE. IT IS RECOMMENDED TO USE ADDITIONAL ADHESIVE FOR PERMANENT INSTALLS.
***MAX RUN:** EACH ROLL IS 16.4 FT WITH 3 FT LEADS ON EACH END. TO RUN 32.8 FT, YOU MUST POWER FROM BOTH ENDS OF ROLL OR USE 15V TAP ON TRANSFORMER

AVAILABLE IN 16.4' AND 32.8' ROLLS

LED COB CHANNEL AND LENS OPTIONS

NEW ITEM

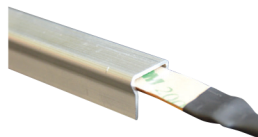
EZ Channel is best for slim profile installs in which there is no need for a lens cover.



EZ CHANNEL

MODEL LED TCH A
DIMENSIONS 1/2"W X 1/8"H
MATERIAL ALUMINUM
LENGTHS 48" PIECES
SHIPS IN (2) 24" PIECES

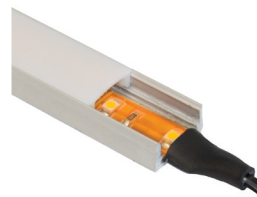
Glare Control Channel provides glare protection for multi-level LED tape installs.



GLARE CONTROL CHANNEL

MODEL LED TCH L
DIMENSIONS 1/2"W X 3/8"H
MATERIAL ALUMINUM
LENGTHS 48" PIECES
SHIPS IN (2) 24" PIECES

Slim Profile Channel & Lens is best for slim profile installs where a heavy diffuser lens is needed.

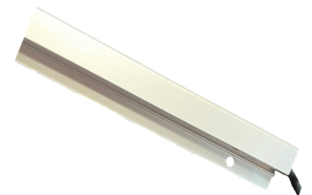


SLIM PROFILE CHANNEL & LENS

MODEL LED TCH SL1
DIMENSIONS 11/16"W X 5/16"H
MATERIAL ALUMINUM
LENS MATERIAL OPAQUE ACRYLIC
LENGTHS 48" PIECES
SHIPS IN (2) 24" PIECES

**LENS INCLUDED
 (EACH SET INCLUDES: 2 ENDS, 3 MOUNTING CLIPS & 3 SCREWS)

Linear Glare Channel & Lens is best for no-nose stairs without a lip.



TOE KICK LINEAR GLARE CHANNEL & LENS

MODEL LED TCH LGP
DIMENSIONS 1/2"W X 5/8"H (WITH EXTENSION)
MATERIAL ALUMINUM
LENS MATERIAL OPAQUE ACRYLIC
LENGTHS 48" PIECES
SHIPS IN (2) 24" PIECES

**LENS INCLUDED
 (EACH SET INCLUDES: 2 ENDS, 2 ANCHORS AND SCREWS)

SNAP-ON CONNECTOR OPTIONS FOR LED COB TAPE

Our Snap-On connectors are designed to easily connect additional power leads and jumpers or joining 2 rolls together. The connectors do not require soldering; simply cut at the designated marks and snap-on.

COB POWER LEAD

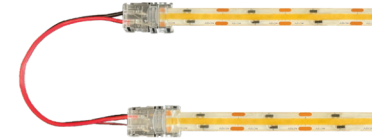


MODEL LED PWR COB WL 10MM
DIMENSIONS 1/2"W x 7/8"L x 6" LEAD

The LED COB Power Lead adds a pigtail lead to connect the LED tape to your low voltage transformer, after the initial (2) factory installed leads on each end of the LED tape have been used.

(EXAMPLE: If 4 ft runs are required, utilize (2) 4 ft ends by cutting at the designated cut marks. The middle portion with no leads may now be used by snapping on a power lead.)

COB IN-LINE JUMPER



MODEL LED IL COB JUMPER 10MM
DIMENSIONS 1/2"W x 7/8"L x 6" JUMPER

The LED COB In-Line Jumper offers the ability to create designs with a wide range of turns on one continuous run.

(EXAMPLE: If your design requires a 4 ft run with a 90° turn and another 4 ft run, simply add a jumper in between the (2) 4 ft runs. One strip would have the pigtail lead which would attach to the low voltage cable.)

COB IN-LINE COUPLER



MODEL LED IL COB CONN 10MM
DIMENSIONS 1/2"W x 3/4"L

The LED COB In-Line Coupler allows 2 LED strips to be joined together.

(EXAMPLE: If (1) continuous run of 20 ft. is required, join a 16 ft LED Tape strip with a 4 ft LED tape strip using the In-Line coupler. One strip would have the pigtail lead which would attach to the low voltage cable.)

INSTALLATION GUIDELINES

MAX RUN INFORMATION

LED-OT-1.5W has a max run of 32.8 ft per dedicated run. Exceeding this length will void any factory warranty.

INSTALLATION NOTES:

For outdoor applications, do not install the LED tape with the surface facing up. The LED tape is not submersible and should not be installed near salt water or chemicals. Do not use near water with chemicals such as chlorine. Needs to be placed 10 ft. from water. Installing it without following these guidelines will void factory warranty. (Contact factory for details)

MOUNTING INSTALLATION:

We recommend using additional adhesive specific to the surface you are adhering the LED tape to.

PRIMARY SIDE DIMMING:

Requires LED magnetic low voltage (MLV) or LED electronic low voltage (ELV) dimmable transformer and compatible LED dimmer (MLV OR ELV) For more information see installation guidelines

+ Fully tested with Lutron Diva (DVLV-600P) dimmer and Lightcraft dimmable transformers.